



# Thunder Eagle, Inc.

P.O. Box 625  
Vienna, VA 22183

Tel: (703) 242-0122 ext. 1  
TollFree: 1-888-553-2928  
[support@weathereagle.com](mailto:support@weathereagle.com)  
[www.weathereagle.com](http://www.weathereagle.com)



## FipsServer™

Professional Integrated Weather Information and Alerting System


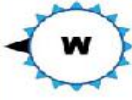


**What:** FipsServer™ is the next generation of Thunder Eagle's legendary weather information systems which combines many information resources into customer configurable web sites and alerting systems:

- NWS text alert messages from their digital database
- NOAA Weather Radio SAME/EAS Alerts and streaming audio
- NWS graphic and digital forecasts
- Traffic cameras
- Local professional weather sensor readings
- NWS satellite images
- NWS radar images
- Web sites easily user customizable with the user's logo, pictures and text messages
- Easily add the Thunder Eagle web sites as a link to customer's existing web site
- Email alerts

NOAA Weather Radio EAS/SAME Alerts							
Num	Status	Event	Expire Date	Expire Time	Remaining Time	Locations	Date and Time Posted
3	Active	Blizzard Warning	2/10/2010	1:46 PM	03:46:40	MD-St.Mary's*MD-Calvert*	2/10/2010 7:58:20 AM
2	Active	Blizzard Warning	2/10/2010	1:46 PM	03:46:40	MD-Montgomery*MD-PrinceGeorge's*	2/10/2010 7:55:20 AM
1	Active	Blizzard Warning	2/10/2010	1:46 PM	03:46:40	DC-DistrictofColumbia*MD-Charles*VA-Warren*VA-Clarke*VA-Loudoun*VA-PrinceWilliam*VA-CityofManassas*VA-CityofManassasPark*VA-Fairfax*VA-CityofFairfax*VA-Arlington*VA-CityofAlexandria*VA-CityofFallsChurch*VA-Stafford*VA-KingGeorge*VA-Fauquier*WV-Jefferson*	2/10/2010 7:49:26 AM

NWS Text Alert Messages						
Active Watches, Warnings and Advisories						
Status	Event	Severity	Area	Details	Expire Time	Fips Code
OK	Flood Warning	Moderate	Isle of Wight; Southampton; City of Franklin; City of Suffolk	FOR THE CHOWAN BASIN...INCLUDING SEBRELL...FRANKLIN...MODERATE FLOODING IS OCCURRING AND IS EXPECTED TO CONTINUE...FLOOD WARNING EXTENDED UNTIL SATURDAY AFTERNOON...THE FLOOD WARNING CONTINUES FOR THE BLACKWATER RIVER ABOVE FRANKLIN * UNTIL SATURDAY AFTERNOON...OR UNTIL THE WARNING IS CANCELLED. * AT 03:45 AM FRIDAY THE STAGE WAS 12.5 FEET * FLOOD STAGE IS 12.0 FEET * FORECAST...THE RIVER...WHICH CRESTED NEAR 13.2 FT...WILL CONTINUE TO FALL TO BELOW FLOOD STAGE BY TOMORROW MORNING. * AT 12.5 FEET...A PORTION OF ROUTE 611...JOYNNERS BRIDGE	14:18 -- 02/13/2010	<051093> <051175> <051620> <051800>

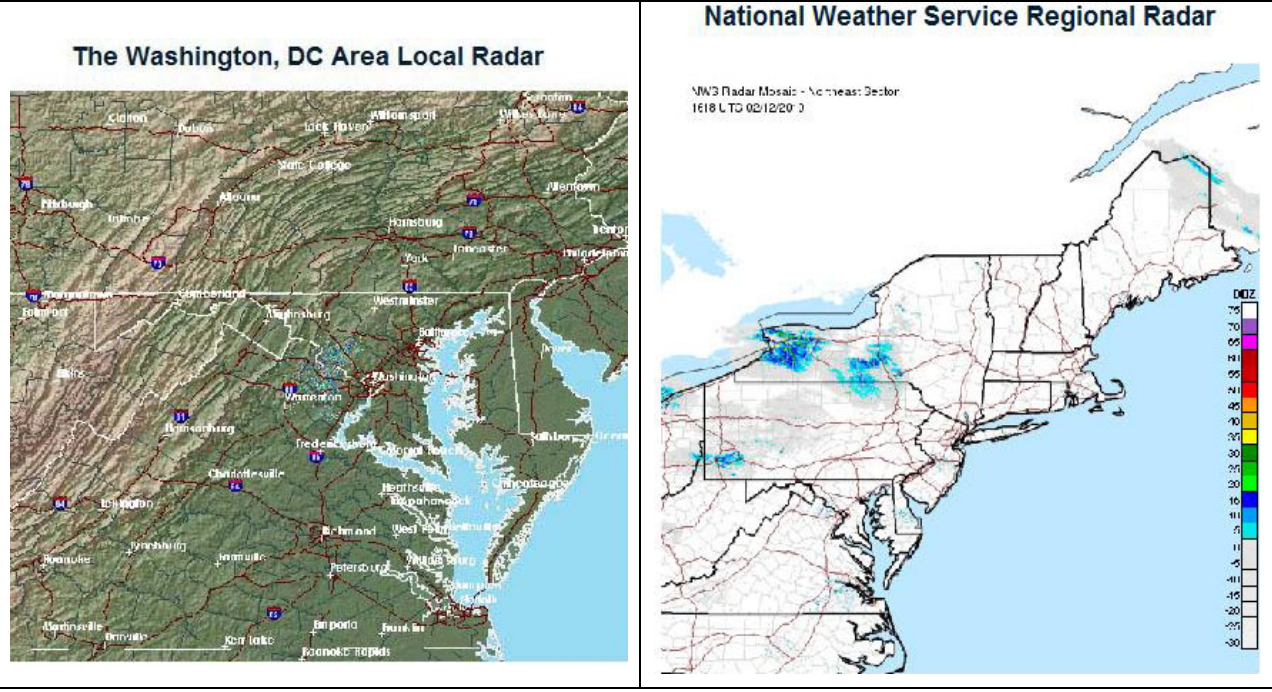
Local Weather

	<b>Time and Date of Observation:</b> 11:24:12 AM Friday, February 12, 2010	<b>Outside Temp:</b> <span style="font-size: 2em;">32°</span> <span style="font-size: 2em;">F</span>	 <span style="font-size: 2em;">3</span> <span style="font-size: 2em;">MPH</span>	 Bright Sun - 56	 No Lightning  No Lightning Detected  0	<b>Precipitation Totals</b> Today: 00.00"  This Month: 00.47"  This Year: 01.97"
	No active alerts from NOAA Weather Radio station KHB36			Active text alerts for The Washington, DC Area		

**The Weather at 11:24:12 AM on Friday, February 12, 2010 in Vienna, VA**

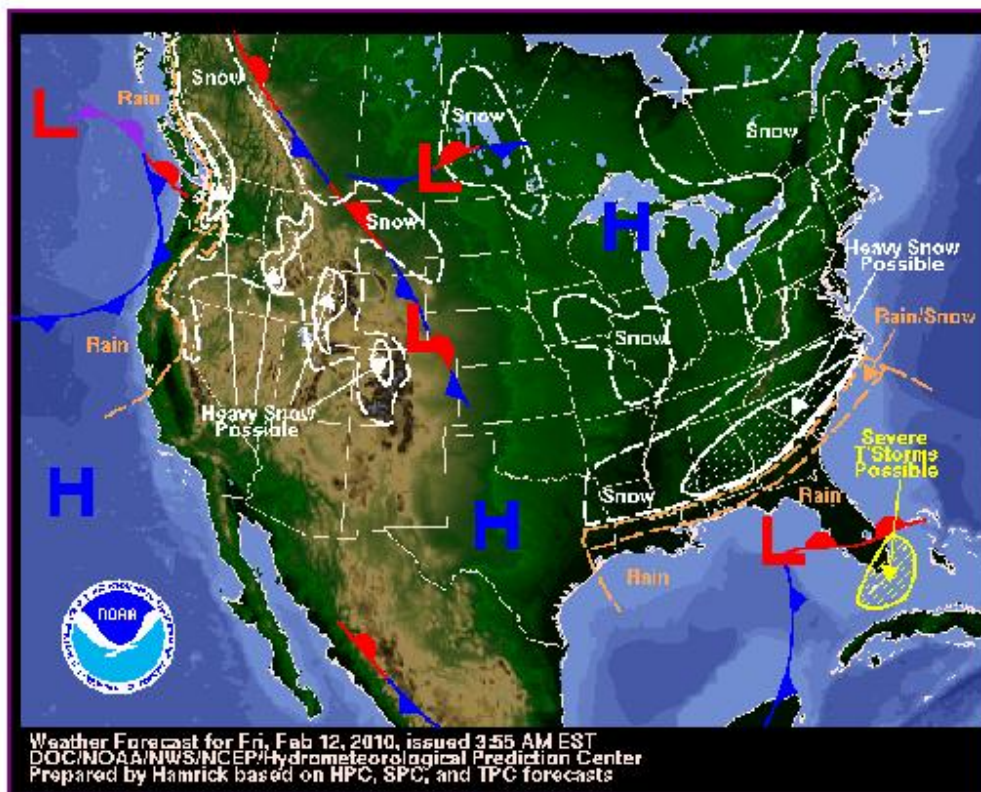
	Current:	High:	Low:
Temperature	32° F	32 F @ 10:52	25 F @ 06:38
Winds	W 3 MPH	NW 13 MPH @ 10:25	
Humidity	52%	67% @ 07:43	52% @ 11:15
Barometric Pressure	29.97F"	30.01" @ 10:11	29.92" @ 00:06
Precipitation Rate	00.00"/hr	00.00" /hr @ 00:00	
Precipitation Totals	Today: 00.00"	This Month: 00.47"	This Year: 01.97
Lightning	0	0 at 00:00	
Solar Readings	Bright Sun - 56	Bright Sun - 56 @ 11:14	
Dew Point	15°F		
Heat Index	32°F		
Wind Chill	29°F		

Local and Regional Radar



National Forecast Map

The National Forecast Map



NWS Forecasts

NWS Forecast for: Vienna VA

Issued by: National Weather Service Baltimore, MD/Washington, D.C.  
 Last Update: 9:05 am EST Feb 12, 2010



This Afternoon	Tonight	Saturday	Saturday Night	Sunday	Sunday Night	Presidents' Day	Monday Night	Tuesday
Mostly Sunny	Mostly Cloudy	Partly Sunny	Partly Cloudy	Mostly Sunny	Partly Cloudy	50% Chance Snow	50% Chance Snow	Mostly Cloudy
Hi 36 °F	Lo 21 °F	Hi 32 °F	Lo 19 °F	Hi 35 °F	Lo 19 °F	Hi 33 °F	Lo 23 °F	Hi 34 °F

**This Afternoon:** Mostly sunny, with a high near 36. Northwest wind between 8 and 10 mph.

**Tonight:** Mostly cloudy, with a low around 21. North wind between 6 and 8 mph.

**Saturday:** Partly sunny, with a high near 32. North wind between 11 and 18 mph.

**Saturday Night:** Partly cloudy, with a low around 19. West wind between 14 and 16 mph.

**Sunday:** Mostly sunny, with a high near 35. West wind between 14 and 16 mph.

**Sunday Night:** Partly cloudy, with a low around 19.

**Presidents' Day:** A chance of snow. Mostly cloudy, with a high near 33. Chance of precipitation is 50%.

**Monday Night:** A chance of snow. Cloudy, with a low around 23. Chance of precipitation is 50%.

**Tuesday:** Mostly cloudy, with a high near 34.

## Local Traffic Cameras



Washington: I-66 @ Nutley St  
Provided by VDOT

[View Camera Live](#) [Other Cameras](#) [Get This Widget](#)

## Local Text Alerts

From: alert6845@cean.fairfaxcounty.gov  
[\[mailto:alert6845@cean.fairfaxcounty.gov\]](mailto:alert6845@cean.fairfaxcounty.gov)  
 Sent: Thursday, February 11, 2010 4:12 PM  
 To: rsan@cean.fairfaxcounty.gov  
 Subject: Schools closed and govt open with unscheduled leave

## County and School Status

- Fairfax County Government offices are open Friday, Feb. 12, 2010, however employees have been granted unscheduled leave. Emergency service personnel should report as scheduled.
- Fairfax County Public Schools are closed Friday, Feb. 12, 2010.

## Courts

- The Fairfax County Circuit Court, General District Court and Juvenile and Domestic Relations District Court will be open.

## SACC

- School Age Child Care (SACC) centers are closed.

**How: Data Input**

Creating the hardware, software, and IT infrastructure to reliably obtain and distribute the above information is a daunting undertaking. It has taken us years to develop this system.

Thunder Eagle strives to create the above information source for each client as plug and play system. Thunder Eagle will prepare a pre-wired, rack mounted, equipment rack containing:

Weather Eagle® 110 NOAA Weather Radio Receiver	<a href="http://www.weathereagle.com/we110.htm">http://www.weathereagle.com/we110.htm</a>
Alert Eagle® 120 EAS/SAME Decoder	<a href="http://www.weathereagle.com/ae120.htm">http://www.weathereagle.com/ae120.htm</a>
Texas Weather Instruments Pro Weather Station	<a href="http://www.weathereagle.com/tx-wx.htm">http://www.weathereagle.com/tx-wx.htm</a>
VoIP for streaming NOAA Weather Radio	<a href="http://www.weathereagle.com/voip.htm">http://www.weathereagle.com/voip.htm</a>
Ethernet connections to our server	<a href="http://www.weathereagle.com/NI200.htm">http://www.weathereagle.com/NI200.htm</a>



The IP addresses will be pre-programmed into the units. The client will supply the following connections:

Item	Description
Install the outside antenna connection	For WE110 NOAA weather radio
Install outside weather sensors	For Texas Weather Instruments weather station
Ethernet connection	For data to be sent to Thunder Eagle server
120 VAC power with backup generator (if possible)	To reliably power the system

This system will provide the raw weather data obtained from the client's location to our server for processing.

## How: Data Output

- Template Web Sites

Our server handles all of the hard work of taking and processing the data from the radio and sensors and placing the data on the template websites.

Thunder Eagle will host a set of web sites with the url in the form of:

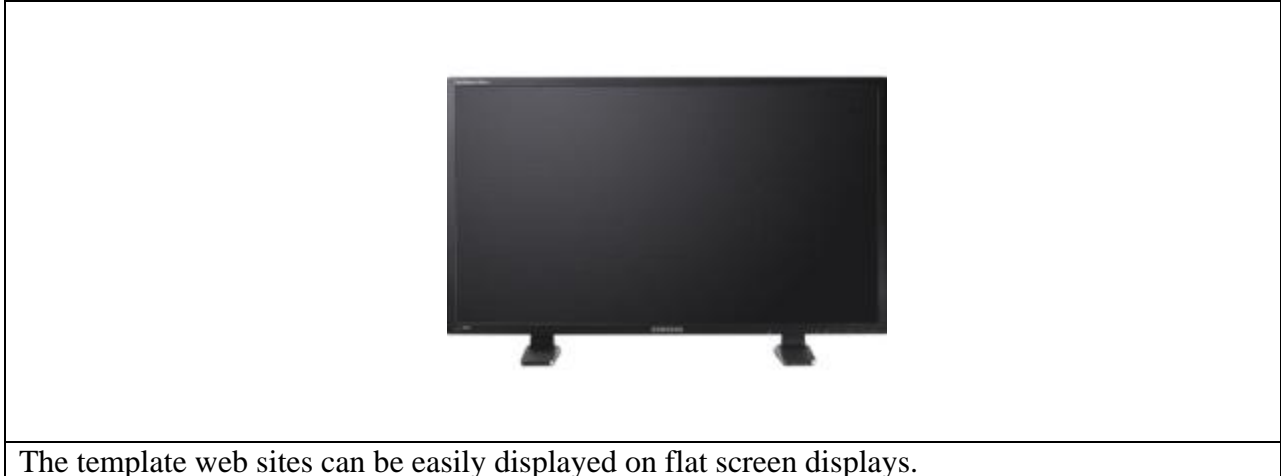
YourCountySt.alerteagle.com

Weather Tabs (user can start and stop)	<a href="http://viennava.alerteagle.com/weathertabs1.aspx">http://viennava.alerteagle.com/weathertabs1.aspx</a>
Flat Screen Displays (auto scans the screens)	<a href="http://viennava.alerteagle.com/current.aspx">http://viennava.alerteagle.com/current.aspx</a>
Single Page for smart phones	<a href="http://viennava.alerteagle.com/default.aspx">http://viennava.alerteagle.com/default.aspx</a>
Scan (without local weather)	<a href="http://viennava.alerteagle.com/local1.aspx">http://viennava.alerteagle.com/local1.aspx</a>
Highs and lows for the day	<a href="http://viennava.alerteagle.com/minmax1.aspx">http://viennava.alerteagle.com/minmax1.aspx</a>
Weather Tabs (without local weather)	<a href="http://viennava.alerteagle.com/weathertabs2.aspx">http://viennava.alerteagle.com/weathertabs2.aspx</a>

- **Use Existing Alert Eagle 120 and 400**

Thunder Eagle's existing AE120 and AE400 can use their current equipment to provide the audio and weather alert information to the FipsServer software. This will provide vast additional functionality at an excellent cost savings.

- **Flat Screen Displays**



- **NOAA Weather Radio**

Weather alerts from NOAA weather radio and from the NWS text warning digital data base will appear when active.

The NOAA weather radio alerts will appear in a color coded grid with the following features:

Color coded watches, warnings and tests	Warning=red; Watch=yellow; Test=green
Expire date and time	
Remaining time countdown timer	
Locations	
Issue date and time	
An alert indication on the header while alerts are active	

The alerts will automatically disappear from the grid when they expire.

This feature was designed to provide instant situational awareness of all of the weather alerts affecting your area. This has been successfully used inside the NWS forecast offices in support of their severe weather operations.

- **NWS Digital Alert Database**

Digital text alerts from the NWS back up the NOAA weather radio alerts. The digital text alerts provide the long description of the alert. In addition, all NWR alerts expire in 6 hours, no matter how long the alert is actually effective. The digital alert will be up as long as active and will

disappear when cancelled. Digital alerts can be automatically obtained from any location in the United States. The user will select the alerts to be displayed.

Advisories, which are not tone alerted on NOAA weather radio, will appear in the digital database.

- **Streaming NOAA Weather Radio**

Our server will host the streaming NOAA weather radio audio stream that can be accessed from computers and web enabled cell phones.

- **NWS Forecasts**

NWS forecasts, including the popular 7 day forecast at a glance icons, and watches, warnings, statements and advisories are available through the website. Try it now:

<http://www.weathereagle.com/Database1/NWSForecastZip1.aspx>

- **Desktop Alert**

The web sites can trigger the Thunder Eagle desktop alert program.

- **\*\*Easy User Website Customization**

Thunder Eagle will host a secure user website update section for each web site client.

Clients can upload their own text messages and pictures to be posted on their web site. This will be very helpful with important information such as blizzard and hurricane preparedness, information for current events, such as July 4<sup>th</sup> activities and their own logos to customize their web site.

The web site updates are hosted through our portal with an ID and Password:



THUNDER EAGLE, INC. Wireless Alerting Systems

THUNDER EAGLE, INC.  
Wireless Alerting Systems

Thunder Eagle Support | Instructions | Contact Us | Log Out |

**User Login for FipsServer Software**

Please Log In to Continue

Log In

User Name:

Password:

Log In

There are two levels of users. Administrator(s) who can make all changes to the web sites, and user(s) who can make limited changes.

Changes are made easily from the Thunder Eagle web site update web site, which is specific to one client's web site. Changes are as simple as clicking on a variable, typing in the new data and pressing return. The web site is automatically updated.

Thunder Eagle will provide a simple ftp (file transfer protocol) software client to make uploading secure and easy.

PageID	PageName	ItemDescription	ItemName	ItemData: (Click an item to edit. Then press Enter)
0	Global Setting	This is the city or locale name you wish to use on the site.	City	Scott County
1	Global Setting	This is the state name spelled out.	State	Virginia
2	Global Setting	This is the two-letter state postal abbreviation. This is the ID of the NOAA	StateCode	VA

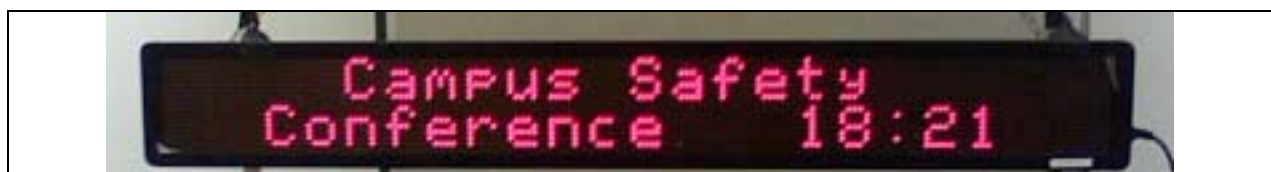
- **Printer**

Rugged Ethernet enabled printers can be added to the system. Just plug it into AC 120V power and connect it to the Ethernet and the server will automatically send alert messages to the printer.

Printers can easily be placed at remote locations without having to configure the local IT network.



- **LED Signboards**



The two line led sign boards are Ethernet enabled and will receive alert messages from the server. Authorized users can also place their own messages on the signboards through the server.

- **Local Weather Station**



Our software not only obtains complete, professional, weather data from the Texas Weather Instruments weather station, but also enables the user to synchronize the weather settings with local calibrated references, such as airport observations. Additionally, our software integrates the raw weather readings to provide 'smart' observations. For example, the solar readings are integrated with the local sunrise / sunset data and the rain sensor, to get an output of sunrise, sunset, light or heavy rain, and various severity thresholds of lightning detection.

- **SignPrinter® Interface**



The Ethernet enabled SignPrinter® interface can be connected to the server. On receiving an alert, the SignPrinter® will flash a strobe light, beep, send the message to the printer and store the last message in the unit for alert reception verification.

- **Email**

The FipsServer will send the alerts to user selected emails and text enabled cell phones.

- **Two Way Radio Interface**



- **Annual Telephone Support / Web and Email Hosting Fee**

After the first year of service, a modest fee of about \$2,500 will continue web hosting, email hosting, and telephone support.

- **Customizable System**

The Thunder Eagle FipsServer system is designed to be both reliable and flexible. The system is designed to be integrated into the user's existing systems.

- **Public Service Component**

Thunder Eagle's core foundation is public service generally, and to support the National Weather Service (NWS) operations in particular, which benefits everyone. Once the weather data is on the server, it is our goal to use it to support the NWS, as well as to distribute this vital information broadly.

- **Improvements**

Thunder Eagle listens to your suggestions. If there is a feature that would be useful, please send an email to [support@weathereagle.com](mailto:support@weathereagle.com)

Revised 02/16/2010